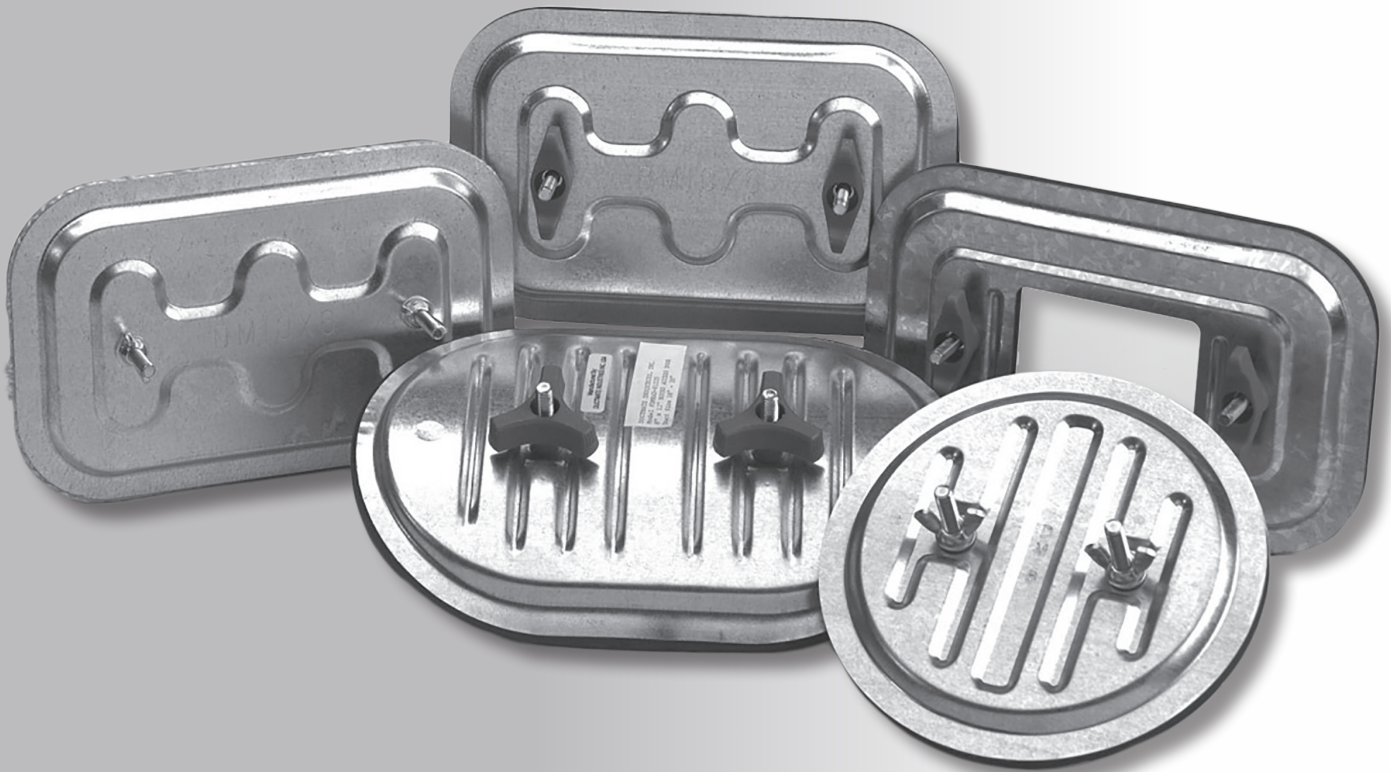


Ductware

Access Panels

By Ductmate



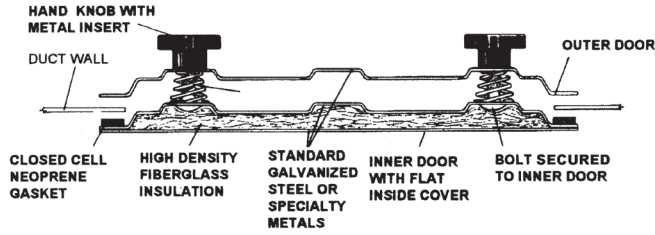
Sandwich[®] Access Panels

Quick and Easy

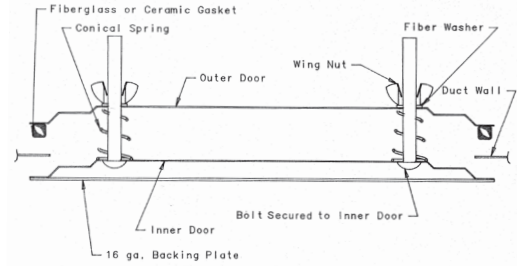
- Advanced Pressure Vessel Design
- Insulated, Uninsulated, and Specialty Metals
- No measuring necessary (self-adhesive template provided)
- Effortless Opening and Closing (No Tools Required)
- Shape Provides a More Effective Access Area
- No Frame to Install

Ductware[®]
Productivity solutions with green results

Rectangular



Hi-Temp



DESCRIPTION

Access panel for rectangular duct.

BASIC USE

To provide easy access into air ducts and units. The panel was developed to provide a solid, well-insulated, leakproof panel that is simple to install.

SPECIAL CHARACTERISTICS

- Insulated or uninsulated
- Smooth interior finish on insulated doors
- Tested to 5000Pa. with no leakage noted
- Tested to negative 2500Pa. with no leakage noted
- Please specify when ordering doors for negative pressure applications as gasket is placed to the outside panel
- Insulated doors are recommended for negative pressure applications

TECHNICAL INFORMATION

a. Panels

The insulated Sandwich Access Panel consists of three layers of precision stamped steel. The inside panel consists of two layers of metal which are spot welded together along the rim encapsulating high density fiberglass insulation with Ecose® Technology UL classified FHC25/50. Uninsulated panels have similar construction without the backing plate and insulation.

****NOTE:** The 610mm x 457mm panel consists of only two layers of precision stamped steel. A polyester foam pad installed between the inner and outer door panels provides insulation. (The 610mm x 457mm panel is not available with high density fiberglass insulation).

b. Gasket

Closed cell neoprene gasket is UL94HF1 listed with a service temperature range of (ASTM D746) -29°C to 93°C. The gasket is bonded to the inside panel of the access panel to ensure consistent installations.

c. Springs

Zinc plated conical springs are installed, between the inner and outer panel, to facilitate opening.

d. Knobs

Red polypropylene molded knobs have threaded metal inserts to eliminate thread stripping. Knobs are easily turned by hand. Knobs are UL94HB listed.

e. Bolts

Zinc plated carriage bolts are secured to inner panel.

f. Template

Self adhesive template is provided for the exact size of duct opening required.

DESCRIPTION

Access panel for round or rectangular duct.

BASIC USE

To provide easy access into grease duct or high-temp duct systems. The panel was developed to provide a solid, leak resistant panel that is simple to install.

High-Temp access panel application approval resides with the authority having jurisdiction.

SPECIAL CHARACTERISTICS

- Available in all sizes of standard flat and round duct access panels
- 16 gauge black iron backing plate

TECHNICAL INFORMATION

a. Panels

The Hi-Temp Access Panel consists of two layers of precision stamped, hot-dipped galvanized steel and one 1.6mm thick black iron backing plate. The backing plate is spot welded to the inside panel.

b. Gasket

For Hi-Temperature application fiberglass rope (538°C max) is permanently bonded to the outside panel of the access panel to eliminate leakage. For Grease Duct application, Ceramic Fiber Gasket (1260°C max – meets NFPA 96 standards) is permanently bonded to the outside panel of the access panel to eliminate leakage.

c. Springs

Zinc plated conical springs are installed, between the inner and outer panel, to facilitate opening.

d. Wing Nuts

Zinc coated wing nuts are easily turned by hand.

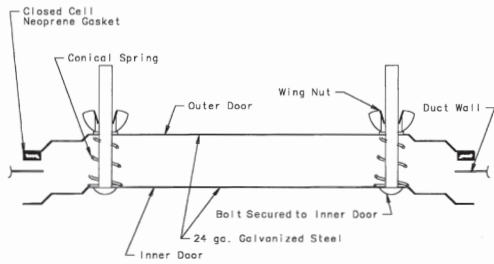
e. Bolts

Zinc plated carriage bolts are secured to inner panel.

f. Template

Self adhesive template is provided for the exact size of duct opening required.

Circular Clean-Out



DESCRIPTION

Access panel for duct cleaning.

BASIC USE

To provide easy access into air ducts and units. The panel was developed to provide a solid, leakproof panel that is simple to install.

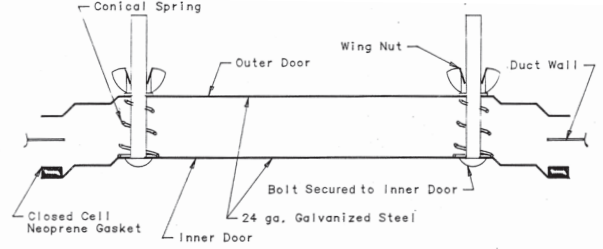
SPECIAL CHARACTERISTICS

- Tested to 4982Pa with no leakage noted
- Tested to negative 2490Pa with no leakage noted
- Insulated or uninsulated

TECHNICAL INFORMATION

- Panels**
The Circular Access panel consists of two layers of precision stamped, hot-dipped galvanized steel.
- Gasket**
Closed cell neoprene gasket is UL94HF1 listed with a service temperature range of (ASTM D746) -29°C to 93°C. The gasket is permanently bonded to outside panel of the access panel to eliminate leakage.
- Springs**
Zinc plated conical springs are installed over the bolts, between the inner and outer panel, to facilitate opening.
- Wing Nuts**
Zinc coated wing nuts are easily turned by hand without tools.
- Bolts**
Zinc plated carriage bolts are secured to inner panel.
- Template**
A polyester foam pad installed between the inner and outer panel.

Clean-Out



DESCRIPTION

Access panel for duct cleaning.

BASIC USE

To provide easy access into air ducts and units.

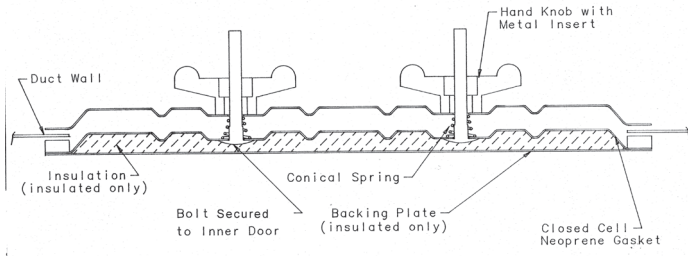
SPECIAL CHARACTERISTICS

- Our lowest cost panel
- Tested to negative 4982Pa with no leakage noted
- Tested to negative 2490Pa with no leakage noted

TECHNICAL INFORMATION

- Panels**
The Clean-Out Access panel consists of two layers of precision stamped, hot-dipped galvanized steel.
- Gasket**
Closed cell neoprene gasket is UL94HF1 listed with a service temperature range of (ASTM D746) -29°C to 93°C. The gasket is bonded to the inside panel of the access panel to insure consistent installations.
- Springs**
Zinc plated conical springs are installed, between the inner and outer panel, to facilitate opening.
- Wing Nuts**
Zinc coated wing nuts are easily turned by hand.
- Bolts**
Zinc plated carriage bolts are secured to inner panel.
- Template**
Self adhesive template is provided for the exact size of duct opening required.

Round Duct



DESCRIPTION

Access panel for round ducts.

BASIC USE

To provide easy access into air ducts and units. The panel was developed to provide a solid, leakproof panel that is simple to install.

SPECIAL CHARACTERISTICS

- Insulated or uninsulated
- Smooth interior finish on insulated panels
- Tested to 4982Pa with no leakage noted
- Tested to negative 2490Pa with no leakage noted
- Please specify when ordering panels for negative pressure applications as gasket is placed to the outside panel
- Insulated panels are recommended for negative pressure applications

TECHNICAL INFORMATION

a. Panels

The insulated Round Duct Access Panel consists of three layers of precision stamped steel. The inside panel consists of two layers of metal which are spotwelded together along the rim, encapsulating high density fiberglass insulation with Ecosse® Technology UL classified FHC 25/50 Uninsulated panels have similar construction without the backing plate and insulation.

NOTE: The 610mm x 457mm access panel consists of only two layers of precision stamped steel. A polyester foam pad installed between the inner and outer panels provides insulation. (The 610mm x 457mm panel is not available with high density fiberglass insulation).

b. Gasket

Closed cell neoprene gasket is UL94HF1 listed with a service temperature range of (ASTM D746) -29°C to 93°C. The gasket is bonded to the inside panel of the access panel to insure consistent installations.

c. Springs

Zinc plated conical springs are installed, between the inner and outer panel, to facilitate opening.

d. Knobs

Red polypropylene molded knobs have threaded metal inserts to eliminate thread stripping. Knobs are easily turned by hand. Knobs are UL94HB listed.

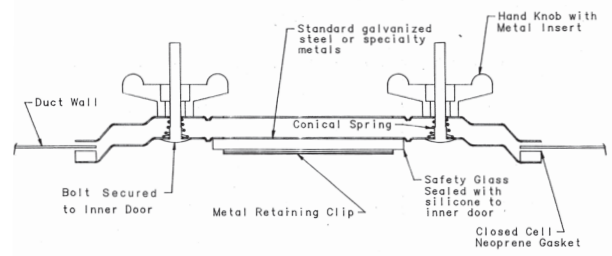
e. Bolts

Zinc plated carriage bolts are secured to inner panel.

f. Template

Self adhesive template is provided for the exact size of duct opening required.

Observation



DESCRIPTION

Access panel which allows inspection of the inside of the duct without panel removal.

BASIC USE

To provide easy access into air ducts and unit and allow for viewing the inside of the duct. The panel was developed to provide a solid, leakproof panel that is simple to install.

SPECIAL CHARACTERISTICS

- 102mm x 35mm viewport
- Safety glass used for window
- Tested to 5000Pa with no leakage noted
- Tested to negative 2500Pa with no leakage noted

TECHNICAL INFORMATION

a. Panels

The Observation Access Panel consists of two layers of precision stamped, hot-dipped galvanized steel.

b. Gasket

Closed cell neoprene gasket is UL94HF1 listed with a service temperature range of (ASTM D746) -29°C to 93°C. The gasket is permanently bonded to the inside panel to eliminate leakage.

c. Springs

Zinc plated conical springs are installed, between the inner and outer panel, to facilitate opening.

d. Knobs

Red polypropylene molded knobs have threaded metal inserts to eliminate thread stripping. Knobs are easily turned by hand. Knobs are UL94HB listed.

e. Bolts

Zinc plated carriage bolts are secured to inner panel.

f. Glass

Safety glass (6.35mm) is permanently sealed with silicone.

g. Clips

Hot-dipped galvanized steel clips mechanically fasten the safety glass in place.

f. Template

Self adhesive template is provided for the exact size of duct opening required.

PACKAGING INFORMATION

Rectangular

Size (mm)	Part No.	Gauge	No. Per Carton	Kg Per Carton
203 x 102	D*84GA	22	10	5.45
254 x 152	D*106GA	22	10	11.34
305 x 203	D*128GA	22	10	15.88
**406 x 305	D*1612GA	20	5	14.1
457 x 356	D*1814GA	20	5	20.4
**610 x 457	D*2418GA	18	3	12.25

* Available in Insulated (I) or Uninsulated (U), please specify

** Oval Shaped

Round Duct

Panel Size	Duct Diameter (mm)	Part Number
203mm x 102mm 22 Gauge 10 per carton 5.45kg per carton	127 - 152	DR*846GA
	178 - 229	DR*849GA
	254 - 279	DR*8411GA
	305 - 356	DR*8414GA
305mm x 203mm 22 Gauge 10 per carton 15.88kg per carton	254 - 279	DR*12811GA
	305 - 356	DR*12814GA
	381 - 406	DR*12816GA
	432 - 457	DR*12818GA
406mm x 305mm 20 Gauge 5 per carton 14.1kg per carton	483 - 508	DR*12820GA
	381 - 406	DR*161216GA
	432 - 457	DR*161218GA
	483 - 508	DR*161220GA
	533 - 559	DR*161222GA
	584 - 610	DR*161224GA
	635 - 711	DR*161228GA
	737 - 813	DR*161232GA
	838 - 914	DR*161236GA
	940 - 1524	Consult Ductware
610mm x 457mm available in 2 panel only 18 Gauge 2 per carton 11.34kg per carton	737 - 813	DR*241832GA
	838 - 914	DR*241836GA
	940 - 1016	DR*241840GA
	1041 - 1118	DR*241844GA
	1143 - 1219	DR*241848GA
	1245 - 1321	DR*241852GA
	1346 - 1422	DR*241856GA
	1448 - 1575	DR*241862GA
	1600 - 3658	Consult Ductware

* Available in Insulated (I) or Uninsulated (U), please specify

Round Duct Hi - Temp

Panel Size	Duct Diameter	Part Number
203mm x 102mm 22 Gauge 10 per carton 5.45kg per carton	5" - 6"	DR846*GA
	7" - 9"	DR849*GA
	10" - 11"	DR8411*GA
	12" - 14"	DR8414*GA
305mm x 203mm 22 Gauge 10 per carton 15.88kg per carton	10" - 11"	DR12811*GA
	12" - 14"	DR12814*GA
	15" - 16"	DR12816*GA
	17" - 18"	DR12818*GA
	19" - 20"	DR12820*GA
406mm x 305mm 20 Gauge 5 per carton 14.1kg per carton	15" - 16"	DR161216*GA
	17" - 18"	DR161218*GA
	19" - 20"	DR161220*GA
	21" - 22"	DR161222*GA
	23" - 24"	DR161224*GA
	25" - 28"	DR161228*GA
	29" - 32"	DR161232*GA
	33" - 36"	DR161236*GA
	37" - 60"	Consult Ductware
	610mm x 457mm 18 Gauge 2 per carton 11.34kg per carton	29" - 32"
33" - 36"		DR241836*GA
37" - 40"		DR241840*GA
41" - 44"		DR241844*GA
45" - 48"		DR241848*GA
49" - 52"		DR241852*GA
53" - 56"		DR241856*GA
57" - 62"		DR241862*GA
63" - 144"		Consult Ductware

* F1 for panels rated to 538°C. F2 for panels rated to 1260°C.

Hi-Temp

Size (mm)	Part No.	Gauge	No. Per Carton	Kg Per Carton
254 x 152	DC106*GA	24	10	14.5
305 x 203	DC128*GA	22	10	22.7
457 x 356	DC1814*GA	20	5	29
**610 x 457	DC2418*GA	18	3	25.9

* F1 for panels rated to 538°C. F2 for panels rated to 1260°C.

** Oval Shaped

Clean-Out

Size (mm)	Part No.	Gauge	No. Per Carton	Kg Per Carton
254 x 152	DC106GA	24	10	6.8
305 x 203	DC128GA	24	10	10.4

Circular Clean-Out

Size (mm)	Part No.	Gauge	No. Per Carton	Kg Per Carton
203	DC*8GA	24	10	5.45
254	DC*10GA	24	10	7.7
305	DC*12GA	24	10	11.8

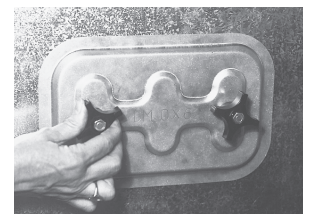
* Available in Insulated (I) or Uninsulated (U), please specify

Observation

Size (mm)	Part No.	Gauge	No. Per Carton	Kg Per Carton
254 x 152	DC106GA	22	10	11.34
254 x 152	DO106GA4	22	10	11.34

INSTALLATION INSTRUCTIONS

1. Peel backing off template and apply to duct in desired location.
2. Opening can be cut with hand-held plasma cutter or by conventional methods.
3. Insert panel into opening at an angle and tighten knobs.
4. Do not overtighten knobs or wing nuts.



LIMITED PRODUCT WARRANTY

Ductmate warrants that Sandwich® Access Panels, when properly installed and maintained, will be free from defects in material and workmanship, and will comply with all written specifications made by Ductmate at the time of sale. Ductmate's warranty shall run for a period of one year from the date of manufacture.

Warranty Limitation

The warranty stated above is in lieu of all other warranties, express or implied, including but not limited to the implied warranties of MERCHANTABILITY AND FITNESS FOR A PARTICULAR PURPOSE. Although Ductmate may have suggested the product, or provided written or oral advice to the Purchaser, it is the Purchaser's responsibility to test and determine the suitability of Sandwich® Access Panels, for the intended use and purpose, and Purchaser and/or its customer assumes all risk and liability whatsoever regarding such suitability.

Limitation of Liability

In the event of a breach of the above warranty, Ductmate's sole obligation, and Purchaser's sole and exclusive remedy, shall be, at Ductmate's option, repair or replacement of any defective products, or refund of an applicable portion of the purchase price. Ductmate shall have no liability for costs of removal or re-installation of the product. The Purchaser agrees that no other remedy, including but not limited to loss of profits, loss sales, injury to person or property, or any other special, incidental or consequential damages, shall be available to the Purchaser for any claim arising out of this Agreement, regardless of whether such claim is made in contract or in tort, including strict liability in tort. In no event will Ductmate be obligated to pay damages to the Purchaser in any amount exceeding the purchase price that the Purchaser paid to Ductmate for the allegedly defective product.